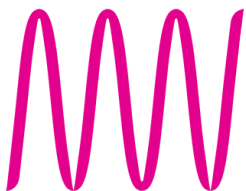


Toys Trail

How many
toys can
you find?

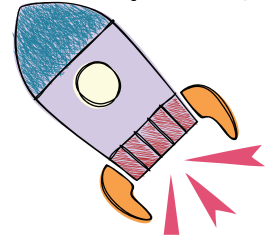


Museum of
Liverpool

FREE ENTRY

liverpoolmuseums.org.uk

The Great Port, Ground floor



Can you find the Meccano Bridge? Meccano is a popular toy for building things. It was invented in Liverpool by Frank Hornby in 1901.



What do you think this Meccano is made from? Circle the right word.
metal plastic wood cloth cheese



The Great Port, Ground floor



Find the Trade Goods wall. Can you find the trains? These are Hornby Trains and they were made in Liverpool and played with all over the world.

Can you find the 5 places where Hornby trains were played with?

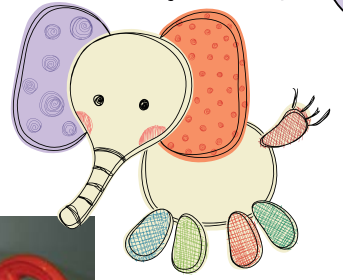
Yes No



Download a high resolution version of this image here
[Hornby trains © National Museums Liverpool](#)



History Detectives, First floor



Can you find the Toys Timeline?

Look carefully at the end of the Timeline to find our toys. They are just above the floor.

Which of these toys is 'old' and which is 'new'?



Which toy do you think is the most interesting in the Toys Timeline? When is it from?

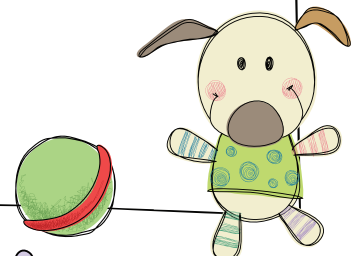
Draw it here.



Download high resolution versions of these images here

[Cement mixer](#) © National Museums Liverpool

[Tin plate car](#) © National Museums Liverpool



The People's Republic, Second floor



Find Blackie the Rocking Horse. Blackie used to stand in a Liverpool shop called Blacklers and lots of children played on him.



Saddle

Reins

Can you draw lines from the words to the right parts of Blackie the Rocking Horse?

Download a high resolution version of this image here [Blackie © National Museums Liverpool](#)



Head

Legs

Find the Dolls House.

There is furniture for a rich house, and furniture for a poor house. In Victorian Liverpool there were very rich people and very poor people who lived right next to each other.

Can you draw one of the pieces of furniture in the correct box?

Poor people's furniture

Rich people's furniture



What was your favourite toy in the museum today? Draw it here.

