



Walker  
Art Gallery

## Walker Art Gallery

William Brown Street,  
Liverpool, UK L3 8EL

## Visual Story

National  
Museums  
Liverpool



## Contents

- Welcome to the Walker Art Gallery
- Getting here
- Getting into the building
- Entering the building
- Finding your way around
- Keeping your things safe
- Exploring the Ground Floor
- The Cafe and Shop
- Inside the cafe
- Toilets and baby changing
- Accessible and Changing Places toilets
- Lifts and Stairs
- Audio guides
- Seating
- Noise levels
- Ground floor galleries – Sculpture gallery
- Craft and Design gallery
- Craft and Design gallery - interactives
- Big Art for Little Artists
- First Floor galleries
- First Floor Information
- First Floor galleries – interactives
- First Floor- Contemporary Exhibition Space
- First Floor galleries - Temporary Exhibitions
- First Floor- Refractive Pool current Temporary Exhibition
- Contact information



## Welcome to the Walker Art Gallery

This **Visual Story** will help you plan how to get in and around the museum and prepare for what you might see and do.

**We are committed to making our Museums and Art Galleries as inclusive and accessible as possible** and so we have thought about the needs of people with a wide range of disabilities and neurodiverse conditions like Autism, Dyspraxia and ADHD.

**It's free to visit the Walker Art Gallery** and donations are welcome. There may be a charge for temporary exhibitions.

**This guide contains information about our main collections.** We sometimes have to close certain rooms.

If there is a room or object you particularly want to see, we recommend that you contact us to check if it is on display.

**Our contact details can be found on the last page of this guide.**



A view of the outside of the Walker Art Gallery.

## Getting here

**Transport:** You can visit the Walker Art Gallery by bike, car, train, bus, ferry, or walking. Our website provides more details about different ways to get here:

<https://www.liverpoolmuseums.org.uk/walker-art-gallery#section--getting-here>

**Useful things to know:** Outside the entrance there is cobbled floor surface.

William Brown Street holds busy events such as Christmas fairs, so please do contact museum staff if this may affect your visit.

**Accessible parking:** There are two accessible parking spaces available in the rear car park. You will need to pre-book an accessible space before your visit.

**Guide Dogs are welcome.** If you plan to visit with an assistance animal other than an assistance dog, please get in touch 7 days prior to your visit to discuss your request with us so we may best accommodate your visit where reasonably practicable.



The cobbled floor area outside the Walker Art Gallery.



## Getting into the building

The main entrance to the Walker Art Gallery can be accessed by a flight of steps or by using a ramp to the right of the steps. **Both the steps and the ramp have handrails.**



Main steps up to the entrance of the Walker Art Gallery.



Ramp up to the entrance of the Walker Art Gallery.

## Entering the building

The main entrance takes you straight to the gallery information desk by two sets of **automatic glass doors**. There are heavy glass doors between many of the upstairs rooms which wheelchair users may need assistance with.

### Security:

Our security team will help ensure you have an enjoyable visit. We do use security measures to ensure the safety and security of all our people and collections, they are designed not to be intrusive. If you have any concerns, please don't hesitate to contact us or speak to us in advance.



The glass entrance doors at the Walker.



## Finding your way around

We offer a website based audio guide and transcript which you can access using your own device and headphones.

<https://www.liverpoolmuseums.org.uk/walker-art-gallery-audio-guide>



Sign showing what to see on the Ground and First floors.

There is signage for the Ground and First Floor facilities, or you can ask a member of staff for help. **Our staff wear bright pink lanyards and will be happy to help you**

We have a digital Gallery Floor Guide available at the Information Desk. You will need a smartphone to access this. Alternatively access our room guide via our website for navigation around the Gallery.

<https://www.liverpoolmuseums.org.uk/walker-art-gallery/room-guide>



Staff wearing a pink lanyards.

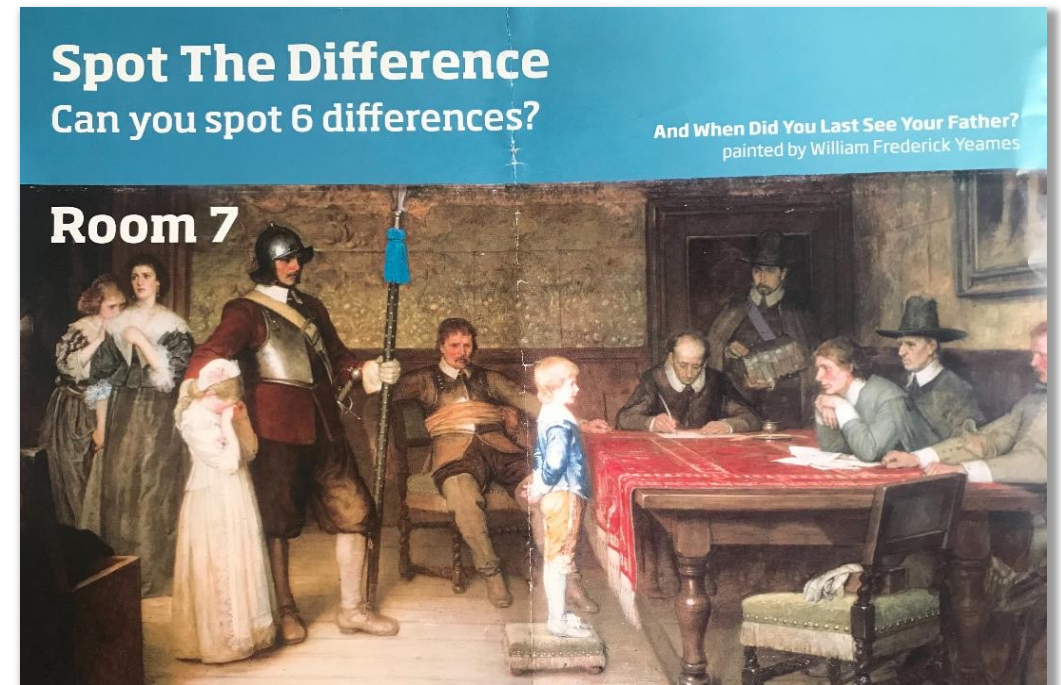
## Exploring our trails and activities

At the Gallery Information Desk, you will find a variety of interactive trails at Walker Art Gallery. Remember to bring your smartphone to access this or view online at <https://www.liverpoolmuseums.org.uk/walker-art-gallery-trail>



QR code available for the Walker Art Gallery Trail.

Keep a look out for any activities happening around the Gallery, such as Artist Talks or Under 5's events. If you have any questions about the Gallery events, please speak to staff.



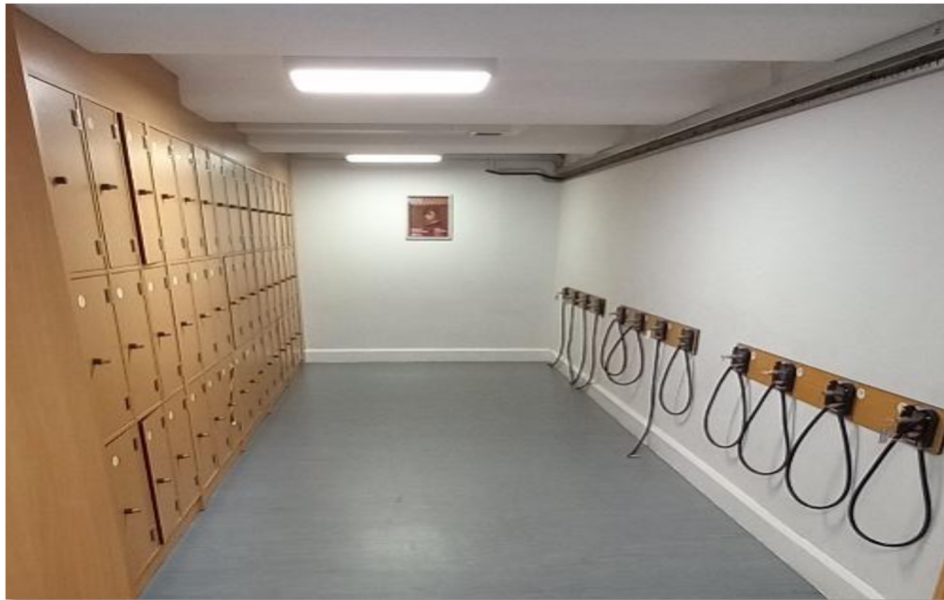
Spot the difference activity poster.



## Keeping your things safe

We have a cloakroom where you can leave coats, bags and other belongings. **The cloakroom has lockers of different heights and sizes and a buggy park.**

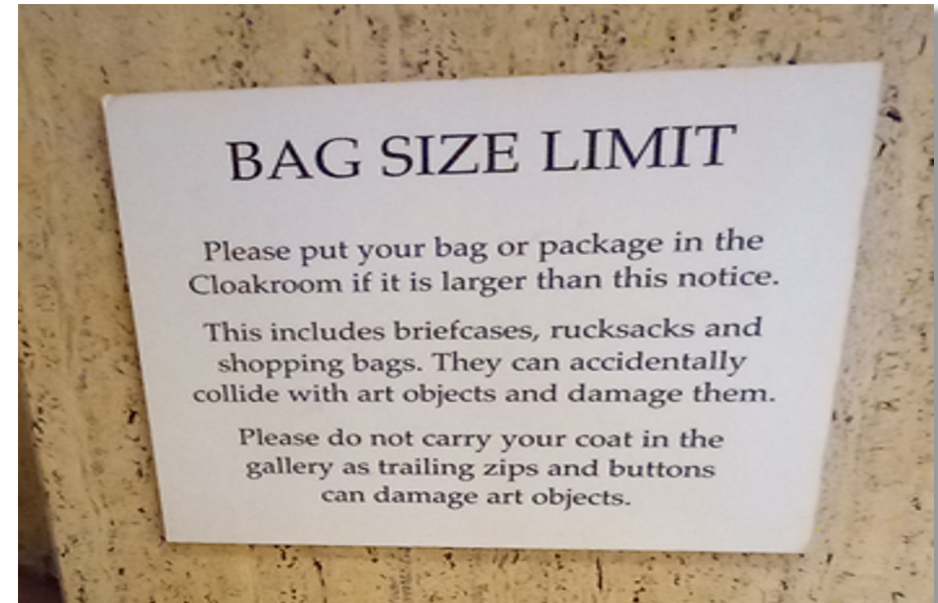
Lockers can be hired for £2 plus a £3 refundable deposit when you empty your locker and return the token. You can purchase a token for the lockers at the information desk.



Corridor with locker area with buggy slings on the right.

There is a size limit for bags in the Gallery which is approximately 36cm in width by 30cm in length.

**Large bags and umbrellas are not allowed in the gallery.**



Sign explaining why large bags can damage objects in the gallery.

## Exploring the Ground Floor

### On the Ground Floor you will find:

- Information desk for enquiries
- Lockers and buggy park
- Lift to all floors
- Big Art for Little Artists – children's gallery
- Cafe
- Ladies and gender neutral toilets
- Sculpture gallery
- Craft and Design gallery

### Fire alarms:

If the fire alarm sounds, please follow staff instructions and ask for assistance if required. Fire alarm tests are planned, **if unexpected loud noises are a concern to you, please call the Gallery in advance to check when the next test will take place.**



The front desk at the Walker Art Gallery.



## The Gallery café and shop

**The Cafe is on the Ground Floor** behind the main reception desk and shop. It serves hot and cold drinks, sandwiches and wraps and a kids' menu. There is a wall mounted menu. The menu is available on our website:

<https://www.liverpoolmuseums.org.uk/cafe-walker-art-gallery>

**The Gallery Shop is on the Ground Floor** between the information desk and cafe area. The shop offers a variety of items including books, posters and gift items.

The shops opening hours are the same as the gallery.



The Cafe servery with cold drinks and sandwiches in the vertical glass cabinets.

## Inside the café

**There is background noise in the café** this can come from:

- Large groups, particularly school groups.
- Fridge and cooler units
- Coffee barista style machines
- Echoes from visitors on the balcony

The chairs in the café have a black back and a white seat.

**We use black food trays within the café.**

### Picnics:

There is no picnic area at the gallery, but you can take a picnic to St Johns Gardens, opposite the gallery.

There is a schools lunch room near the lockers on the Ground Floor which is available for pre-booked school groups to hire.



**The café has a black and beige tiled floor and white tables with black and white chairs. There is a large white sculpture in the middle of the room.**



## Toilets and baby changing facilities

**There are women's toilets** available on the Ground Floor. This facility includes one ambulant mobility cubicle. These are located next to the main entrance doors.

**The male toilets** are available on the First Floor next to Room 11.

**There is a gender-neutral accessible toilet** available at the Walker.

**The baby changing facilities** are available on the First Floor.



White signage, with black symbols for both accessible and standard toilets. 'This toilet can be used by everyone' is also included on the sign.

## Accessible Toilet and Changing Places Toilet

The **accessible toilet** is located on the Ground Floor near the lift landing area, next to the main entrance doors.

There is no Changing Places facility at the Walker Art Gallery. The **nearest Changing Places facility** is in the **Central Library** or the **World Museum** which is on William Brown Street.

**Please note:** The Central Library facility is signposted as Adult Changing Space



Accessible toilet at the Walker Gallery. The toilet accessories and walls are white with a light grey floor.



## Lifts and Stairs

You can get between the Ground and First Floors by lift or stairs. The passenger lift is located next to the main entrance doors on the Ground Floor. The First Floor landing point is next to Room 12.

**The lift has a mirror to support reversing wheelchairs and can hold one person and a wheelchair user.**



Passenger lift with mirror.

The stairs to the First Floor are located within the cafe area. There are two staircases available. **The staircases have 35 steps** with landing areas at regular intervals.

There are paintings along the staircase walls. **Information on the paintings can be found on the First Floor landing area,** ask staff for more details.



Gallery stairs down to Ground Floor with handrail.

## Audio guide

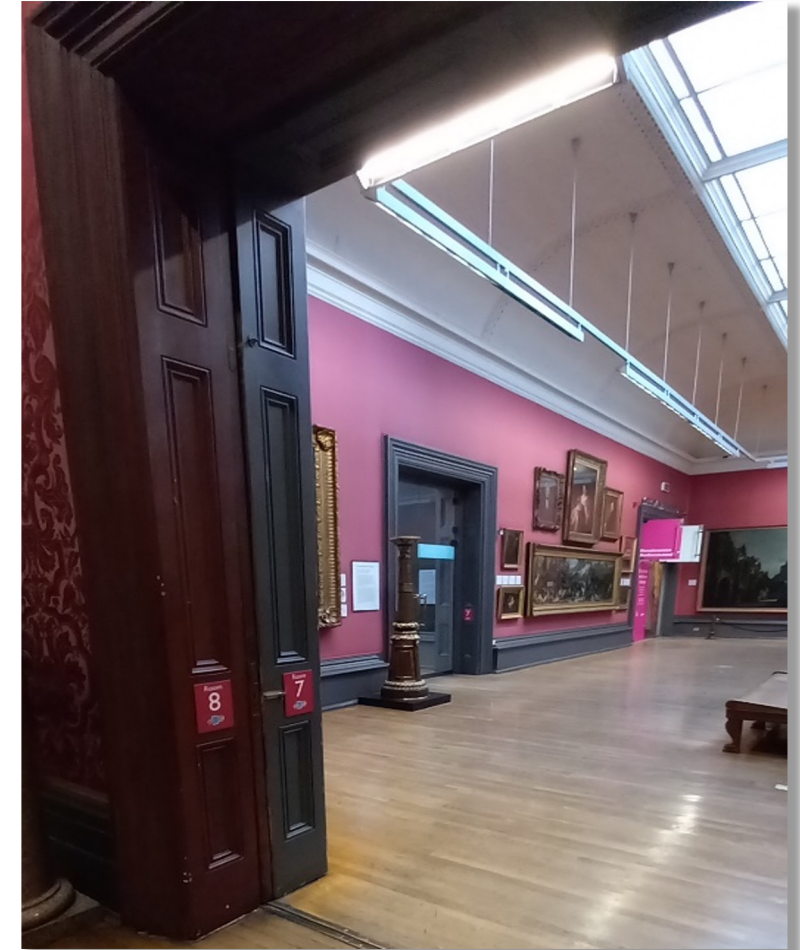
Most of the information and collections at the Walker Art Gallery are visual and text based. We do offer some audible information (which is transcribed) for some of the objects within the collections. These include:

- Dante's Dream by Rossetti
- Isabella by John Everett Millais
- Woman Ironing by Edgar Degas
- Molly Longlegs by George Stubbs

Tinted Venus by John Gibson is audio described

Please find the audio guide on our website at the following link

<https://www.liverpoolmuseums.org.uk/walker-art-gallery-audio-guide>



**Doorway leading to Room 7 of the Walker Art Gallery showing artworks on dark burgundy walls.**



## Seating

There is a range of seating for you to use throughout the Walker Art Gallery.

There are **cushioned benches** in the Craft and Design gallery.

There are **wooden benches** available in:

- Room 5: 18<sup>th</sup>-century paintings gallery
- Room 7: Victorian Narrative Paintings gallery
- Room 8: Victorian High Art 1860-1900
- Room 9: Modern and Contemporary Art
- Room 10: Impressionism and Post-Impressionism
- Room 12-13: Contemporary Art

**Black fold out stools are available at any point in your visit.**  
Please ask our staff for more details or need assistance.



A wooden bench with no fixed armrests, on wooden flooring. A large white humidifier is located next to the bench.

## Noise levels

There are stone and wooden floors throughout the Walker Art Gallery, this can cause **echoes that can be heard throughout the First Floor.**

There is also a constant **low tone, like a hum, from the humidifiers** throughout the galleries.

Be aware that with large school groups and busy periods, voices and footsteps can add to the additional noise pollution, particularly from the cafe.

**Noise defender headphones or ear buds may be useful** in these galleries and during your visit.



First Floor landing area with stone floors.



## Ground Floor galleries

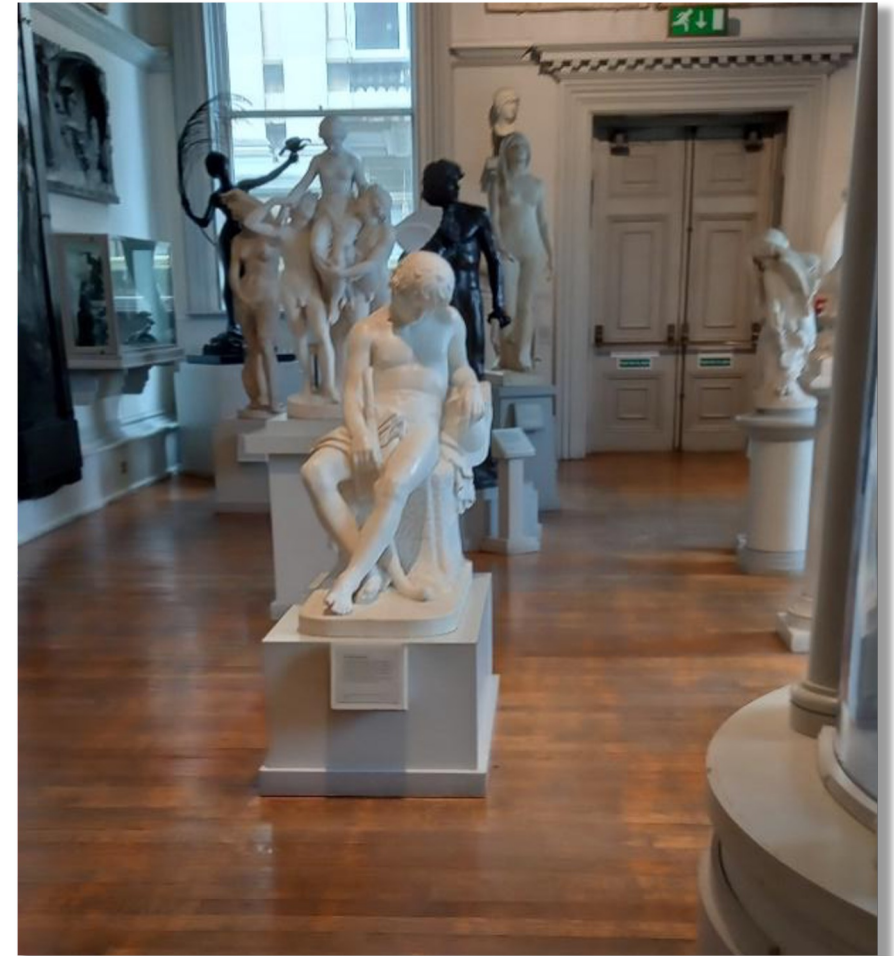
### Sculpture gallery

The gallery contains Roman, 18<sup>th</sup>, 19<sup>th</sup> and early 20<sup>th</sup>-century marble and bronze statues.

**Information format:** The information in this gallery is visual with text-based information.

**Access route:** The gallery has free standing sculptures throughout. The sculptures have text-based labels that are located on free standing plinths.

**Doors:** The double glass doors leading to the Craft and Design gallery are in the Sculpture gallery. Please take care going in and out of the galleries, particularly during busy periods.



Access route through the sculpture gallery.

## Craft and Design gallery

The Craft and Design gallery includes a display of fashion, furniture, ceramics, glass and metalwork from 1700 to the present day.

**Access route:** The walkway in this gallery is narrow. When you reach the end of the gallery you will be required to turn around and leave the way you came. Please take care when manoeuvring around this gallery, particularly during busy periods.



Craft and Design gallery with objects in drawers and cases.

**Format:** The information within this gallery is mostly text based.

**Trigger warning:** There is a mirror located at the end of this gallery, if anyone within your visitor groups has difficulty with perception.



Information panels with images of artists at the top of the text above an upholstered corner bench.



## Craft and Design gallery - continued

### Interactives

This gallery has **four touch screen interactives** where you can explore how objects were made. These touch screens include induction loops and closed captions.

There are **tactile objects** for our visitors to touch, including a cup, bowl and trivet.

We have multiple pull out drawers at low height within the gallery.

Please note some of the interactives within this gallery are closed due to COVID-19.

**Noise Pollution:** Feel free to bring some noise cancelling headphones or earbuds as audio-visual films can be heard within the gallery.



Touchscreen screen with phone style wands. There is a tactile interactive of dishes mounted on a surface

## Big Art for Little Artists

Big Art for Little Artists is an **interactive learning space for all young children. Older children are also welcomed to use this interactive space.**

We have a range of activities such as dressing up, puppets, crafts, drawing and sensory toys.

We regularly host storytelling, Rhyme Time and Song Explore sessions in the gallery. There are drop in sessions between:

**10am- 12pm**

**1pm - 2:30pm**

**3pm- 4:30pm**

Some of these have limited capacities and can be booked via the information desk, please ask for details.

For more information and please visit our website:

<https://www.liverpoolmuseums.org.uk/whatson>



**A Parrot painting and question activity from the Big Art for Little Artists.**



## Big Art for Little Artists continued

**Access:** Enter the space through two large wooden doors following through a set of automatic glass doors.

Some areas in Big Art for Little Artists might not be suitable for wheelchair users such as our pencil seating area.

Please be careful when using the Storytelling space as the carpet is not fixed to the floor.



The pencil seating area in the Big Art for Little Artists room.

There are smaller lockers available to hire in this room.

**Seating:** You will find small tables and chairs in this room. However, speak to staff if you require an alternative chair.

**Trigger Warning:** There are two large mirrors and 4 small circle mirrors located in this room and there is trumpet sounds. It gets rather busy here in the school holidays and weekends, but usually quieter of a morning. Please speak to staff if anyone in your party has issues with perception.



Wooden Stools and tables available on Big Art for Little Artist.

## First Floor galleries

Our First Floor galleries display a wide range of objects and paintings.

Some of our painting information panels include a **LGBTQ+** symbol, to show artists or paintings in relation to the LGBTQ+ community.



Wooden flooring is used throughout the First Floor galleries and the walls are painted in light green-blue.

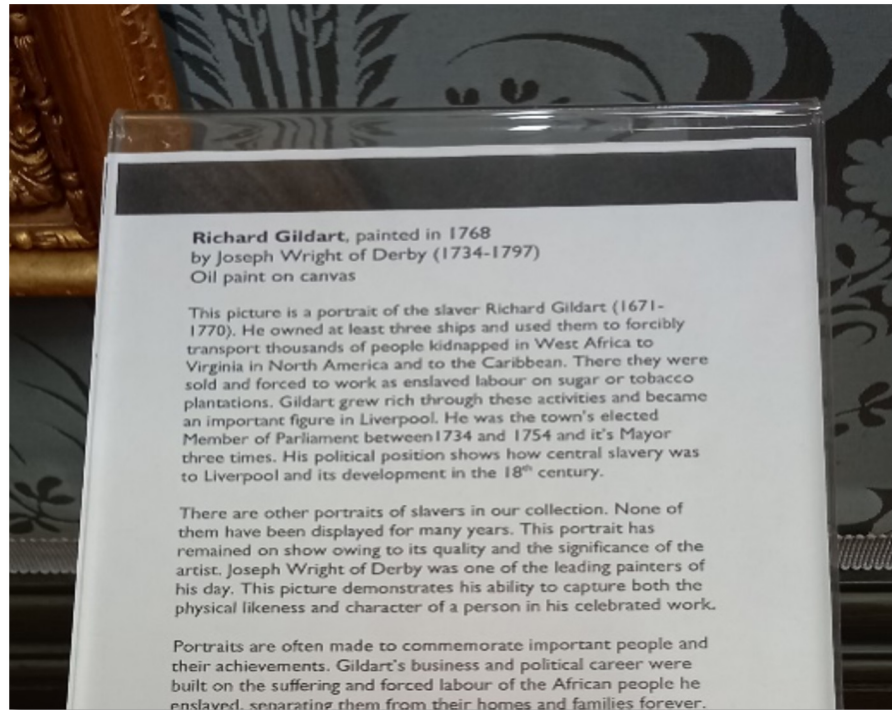
To help you find your way around, **all rooms have a number located in the doorway, the styles of these do vary**. If you need any further help, please ask a member of our staff.



Room numbers in the doorways.

## First Floor information

The information in the First Floor galleries is text based. Most text labels use black text on a white background. Some of the text on the walls is white over a solid-coloured background.



Artwork label for painting of Richard Gildart. The information is black text on a white background in a plastic holder.

**Trigger warning:** Please note that some of the information provided on the paintings can contain **graphic wording**. For example, within Room 6 'Isabella' by John Everett Millais has object label which discusses **sensitive subjects** such as death.

'Isabella' is part of the suite of online, audio and transcript information available via our website

<https://www.liverpoolmuseums.org.uk/artifact/isabella>



## First Floor galleries continued

### Interactives

We offer a range of tactile interactives in Room 11.

In Room 11 you can open the pull drawers to explore light sensitive paintings. You can also find a **tactile replica** of the painting 'Mother and child'.

Our 'Off to the fishing grounds' painting has a push button so that you can discover sounds the people within the painting may have heard.

**This interactive has induction loop enabled.**



Tactile interactive of an artwork on a dark blue plinth. Surrounding walls are white and the floors are light wood.

## First Floor Galleries – Contemporary Exhibition Space

The contemporary exhibition space includes paintings from the winners of the John Moores Painting Prize.

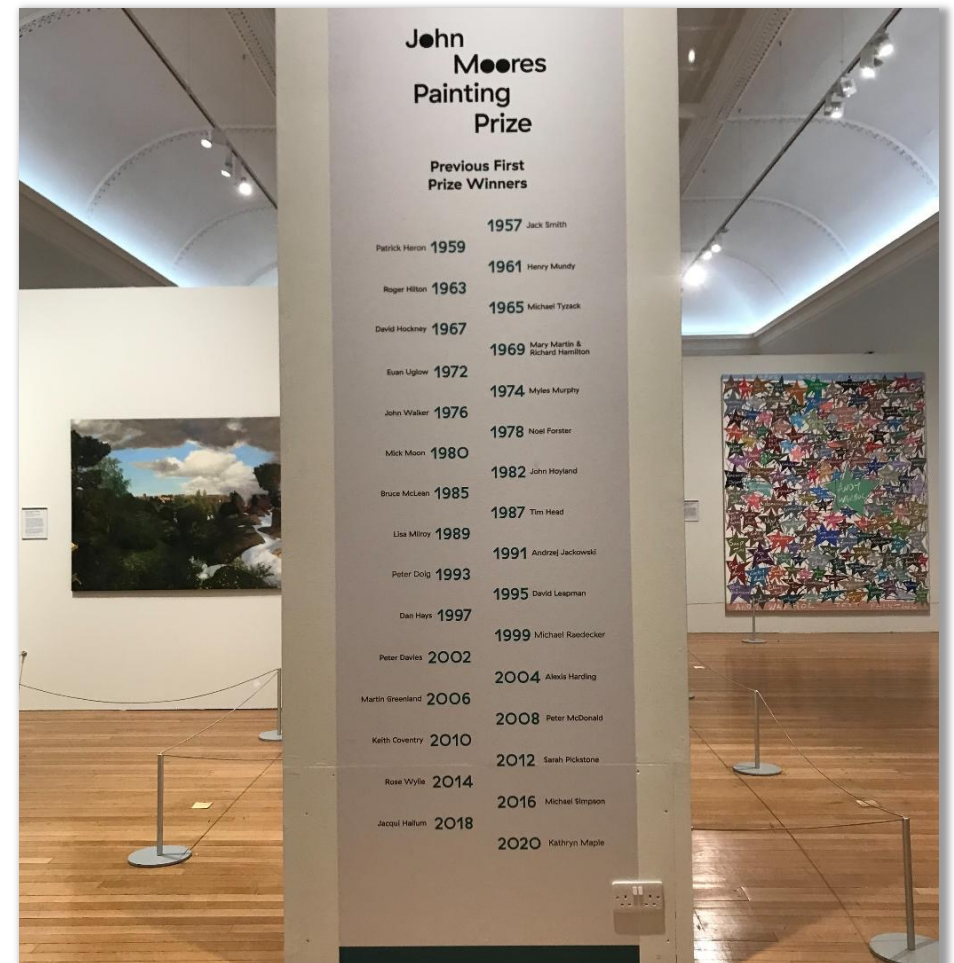
Here you will find paintings that reflect some of the major trends over the past 60 years, including 'Kitchen Sink' realism, abstraction, pop art and figuration.

This space can be accessed via the temporary exhibition space or room 5 in the Gallery.

**Access route:** Part of the contemporary space includes areas that will require a wheelchair user to turn around. Please take care during busy periods. To protect the paintings there are low barriers around the outside of the room.

Information in the contemporary exhibition space is text-based with no alternative formats.

**Trigger warning:** The paintings include topics of football racism, drugs, nudity and sex tourism.



The names of the artists who have previously won the John Moores Painting Prize and the year they won.

## First Floor galleries – Temporary Exhibition Space

There are frequent changes to our exhibitions which include a variety of subjects, related artworks and artists.

There is **audio description** in the temporary exhibition space with information about the latest exhibition.

For updates on the latest exhibition check via our website:

<https://www.liverpoolmuseums.org.uk/walker>

To purchase tickets on the day of your visit, please visit the information desk..



**Audio Description speaker available in the temporary exhibition space.**



## We hope you enjoy your visit

### Address

William Brown Street, Liverpool, UK L3 8EL

### Visit our website for detailed directions

<https://www.liverpoolmuseums.org.uk/walker-art-gallery#section--getting-here>

### Opening times:

Tuesday to Sunday 10am - 4pm

In summer venues close at 6pm and there are additional closures during the Christmas holidays, please check times before you travel.

### Accessibility features

To find out more about our accessibility features please visit:

<https://www.liverpoolmuseums.org.uk/walker-art-gallery/access-and-facilities>

If you have any questions about accessibility at the Walker Art Gallery, do contact us by:

Phone on 0151 478 4199

or

Email [thewalker@liverpoolmuseums.org.uk](mailto:thewalker@liverpoolmuseums.org.uk)

### Our nearby Galleries

#### Museum of Liverpool

Pier Head, Liverpool, UK, L3 1DG

0151 478 4545

#### World Museum

William Brown Street, L3 8EN

0151 478 4393

#### Maritime Museum and International Slavery Museum

Royal Albert Dock Liverpool, L3 4AQ

0151 478 4499

#### Lady Lever Art Gallery

Port Sunlight Village CH62 5EQ

0151 478 4136

#### Sudley House

Mossley Hill Road L18 8BX

0151 478 4016

Our venues are open all year round except on Mondays when they are closed, excluding Bank Holiday Mondays.

They are also closed on 24, 25, 26 & 27 December.